

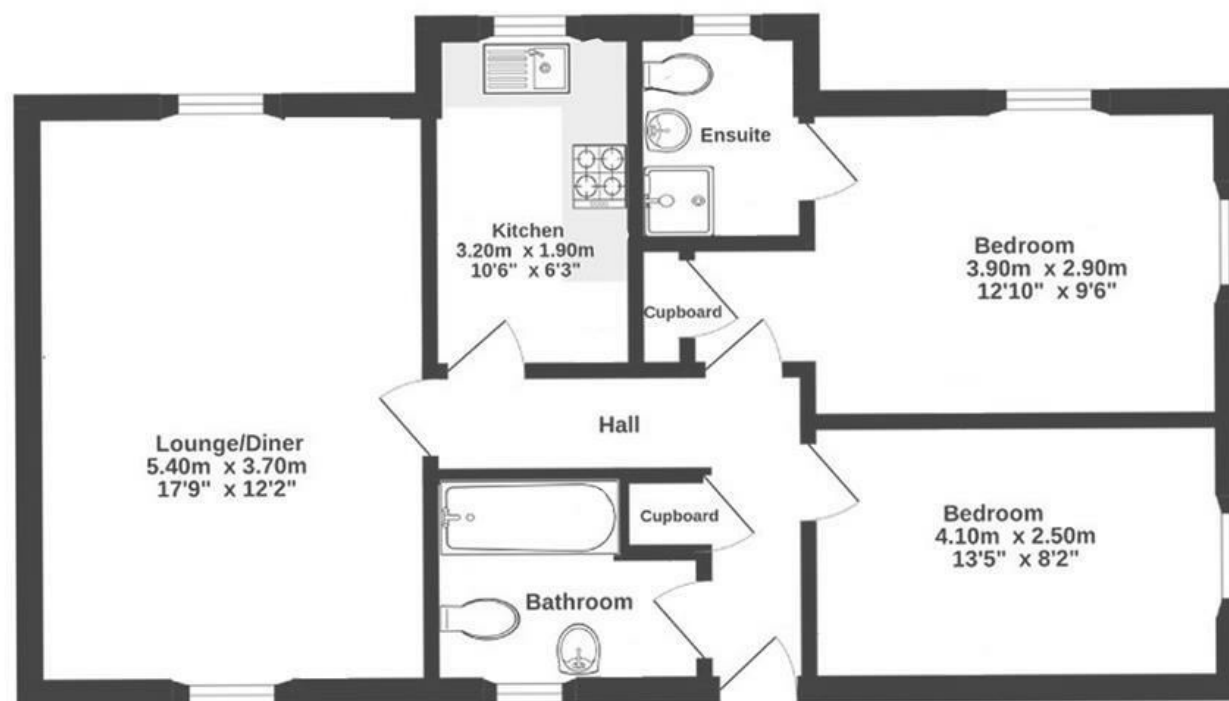
# Bristol South End

## BEDMINSTER

APPROXIMATE FLOOR AREA  
66.3 SQM / 713 SQFT



FIRST FLOOR



Boardwalk

# Bristol South

, BRISTOL



£275,000



2 Bedrooms



BS3 5BH



2 Bathrooms

*"We have loved living in Bristol Southend, it feel tucked out the way of the city while still being walking distance from the harbour for a weekend loop, town and temple meads. The flat itself is so cosy but spacious, we've hosted games nights, pre drinks, dinner parties and Sunday roasts here. Even Christmas for my family one year! The main bedroom gets the most beautiful light thought the day, which is why we choose Lick Pink 0.1 for it, as it feels like it soaks up the sun."*

